



Knowsley

Local Integrated Risk Management Plan

2010/2011

Contents

1. Foreword
2. Our Purpose, Aims and Core Values
3. Introduction
4. Knowsley Fire Story of Place
5. Knowsley Local Area Story of Place
6. Our Plans to Reduce Risk and to Address Local Priorities in Knowsley
 - Princes Trust Team
 - School Fire Liaison Officer
 - Beacon Programme
 - Neighbourhood Firefighter
 - Arson Reduction
 - Kirkby Community Room
 - Youth Intervention Activities
 - Protecting the Vulnerable
 - Smoking Cessation
 - Knowsley Road Safety.
 - Generic Action Point - Fitness and Health
 - Generic Action Point – Corporate Social Responsibility
 - Generic Action Point - Carbon Footprint
 - Generic Action Point – Equality and Diversity
7. Conclusion
8. Appendix A Merseyside Fire & Rescue Service Local Performance Indicators.
9. Appendix B Knowsley Local Area Priority National Indicators

Contact Information

Knowsley Management Team

Position	Name	Email	Contact
District Manager	Chris Howard	chrishoward@merseyfire.gov.uk	0151 296 4605
Station Manager	Chris Head	chrish@merseyfire.gov.uk	
Locality Manager	Jan Carr	janetcarr@merseyfire.gov.uk	

Knowsley Fire Stations

Station	Address	Contact
40 – Huyton	Huyton Lane, Huyton, Liverpool, L36 7XG	0151 296 5445
41 – Whiston	Fire Station Road, Whiston, L35 7JH	0151 296 5535
42 – Kirkby	Webster Drive, Kirkby, L32 8SJ	0151 296 5505

Stations Overlapping Into Knowsley

Station	Address	Contact
16 – Old Swan	628 Queens Drive, Old Swan, Liverpool, L13 5UD	0151 296 5725
19 – Croxteth	Storrington Avenue, Croxteth, Liverpool, L11 9AP	0151 296 5595
17 – Belle Vale	Childwall Valley Road, Belle Vale, Liverpool, L25 2PY	0151 296 6600
52 – Eccleston	Millfields, St Helens, WA10 5NB.	0151 296 5475

Knowsley Local Integrated Risk Management Plan

1. Foreword

Merseyside Fire & Rescue Service is committed to improving outcomes for the people of Knowsley through our innovative approach to delivering community safety initiatives in partnership across the district and through an effective and cost efficient emergency response capability, both of which have produced real results in Knowsley.

There are a number of key local issues in Knowsley including; health and wellbeing, child poverty and serious violent crime. All of these issues influence the risk of fire and other emergencies occurring in our communities.

We work with our partners to reduce risk by tackling specific areas using innovative intelligence led solutions. Our world leading community safety initiatives, such as Home Fire Safety Checks (HFSC) are focussed on the most vulnerable members of our community, while our ground breaking youth intervention work supports social regeneration and community cohesion.

The 2010 risk map clearly shows the effect of our community safety initiatives on the people and communities of Knowsley. Although the majority of areas are still medium risk, the low risk areas have nearly trebled and high risk areas have dropped from 14 to 4 and are now concentrated in the Kirkby Central and Whitefield wards.

The people of Knowsley safer in their homes, because of Initiatives such as the smoking cessation project and safety in the kitchen course which is designed to reduce the number of accidental dwelling fires which occur in the Knowsley.

The residents and visitors to Knowsley are safer from the damage and distress caused by deliberate fire setting because the number of these deliberate fires in Knowsley has reduced year on year. We are planning to continue this trend, by targeting the causes of these criminal and anti-social acts with our partners in Knowsley.

Knowsley's Local IRMP is designed to work with the 7 key drivers contained within Knowsley's Sustainable Communities Strategy. This will support Knowsley Council's vision of becoming the Borough of Choice.

2. Our Purpose, Aims & Core Values

Our Purpose

To make Merseyside a safer, stronger, healthier community.

Our Aims

To work in partnership with others to provide an excellent, affordable service to all the diverse communities of Merseyside that will:

- **Reduce** risk throughout the community by protective community safety services.
- **Respond** quickly to emergencies with professional staff who reflect the diverse communities we serve.
- **Restore**, maintain and improve the quality of life in our communities.
- **Resource** the organisation in a manner which will provide an efficient, cost effective and sustainable service to the people of Merseyside.

Our Core Values

Make a positive difference to our community

We will build upon our position of trust and respect within the community and the professionalism of our staff to tackle the real underlying factors which affect risk. We will achieve this by seeking partnerships in areas where we believe we can contribute to positive outcomes for all concerned. To complement this commitment, we will continue to listen to and engage with the public and our partners through active consultation in order to reflect their needs. We will offer facilities at our community fire stations which reflect the aspirations of local communities to assist in the delivery of our vision for safer, stronger and healthier communities.

We will be more resolute concerning the expected actions of responsible businesses and citizens. We take a great deal of time and effort to manage the risks within Merseyside; we believe that there is a role for all to play in this process. We will encourage and support this responsibility where possible. However, where necessary and appropriate we will enforce compliance with the law to secure the responsible and lawful behaviour of the businesses and citizens of Merseyside.

Provide an excellent and affordable service

We will manage our emergency response flexibly, with an emphasis on those most at risk. We will do this by managing the number and type of appliances which are available to respond to emergencies at different locations throughout the day, night and at different times of the year to more accurately reflect the changing level and location of risk. In conjunction with this we will maximize our capability to respond in a wider rescue role in line with the growing expectations on the Fire & Rescue Service. Our priority is to maintain our current high level of service, we will reduce the impact on our communities of any changes in funding or costs, which are not already recognised in the planning assumptions we have made in our Medium Term Financial Plan.

Everyone matters

We aim to reduce risk in every home on Merseyside to a tolerable level, with no homes being assessed as high risk after we and our partners have offered support to the resident. To achieve this we will be more sophisticated in the way we commit resources to reduce risk; we will continue to offer free Home Fire Safety Checks to residents in Merseyside as we have done for the past ten years, but our key focus will be to work with our partners to identify and provide assistance to those individuals within the community who are most at risk from fire and other emergencies. We will continue to develop a workforce profile which provides diversity and offers equal opportunities for all.

Respect our environment

We will fulfil our responsibilities for protecting the built and natural environment, with support and commitment at the highest level. We will continue to identify and manage our activities, which have an impact on the environment, without compromising our operational response or our service delivery to the communities of Merseyside. We will address our legal requirements, set and achieve challenging environmental objectives and demonstrate continual improvement in the area of environmental management, energy use, water use and waste management. We are taking proactive steps in combating climate change through our carbon management plan, which ensures environmental sustainability in the design, construction and maintenance on our new buildings.

Our people are the best they can be

Our workforce has the necessary knowledge, skills and values to make a difference. They are supported in their roles and encouraged to contribute their ideas to continually improving the organisation and delivering positive outcomes for our communities.

We ensure our staff receive the training they need, in order to deliver all of our services to a high standard and they are protected in their work through a comprehensive and robust approach to health & safety.

3. Introduction

To support our Service Plan and to ensure we communicate with our communities and partners in a meaningful way Merseyside Fire and Rescue Service have produced 5 Local IRMPs. These contain a story of place, an analysis of risk by ward and an action plan detailing how with our partners, we are going to address these risks. These plans focus our frontline resources on tackling the issues which affect risk at a neighbourhood level and become the source for capturing our local plans, to reflect what each station, advocate and manager is planning to do in the community next year.

It is also the document which will summarise what we are trying to achieve with our partners in specific locations through Local Area Agreements.

4. Knowsley Fire and Story of Place

The people and communities of Knowsley are much safer from the effects of fire and on the roads than they were in 2005/6 as a direct result of the actions of Merseyside Fire and Rescue Service and its partners.

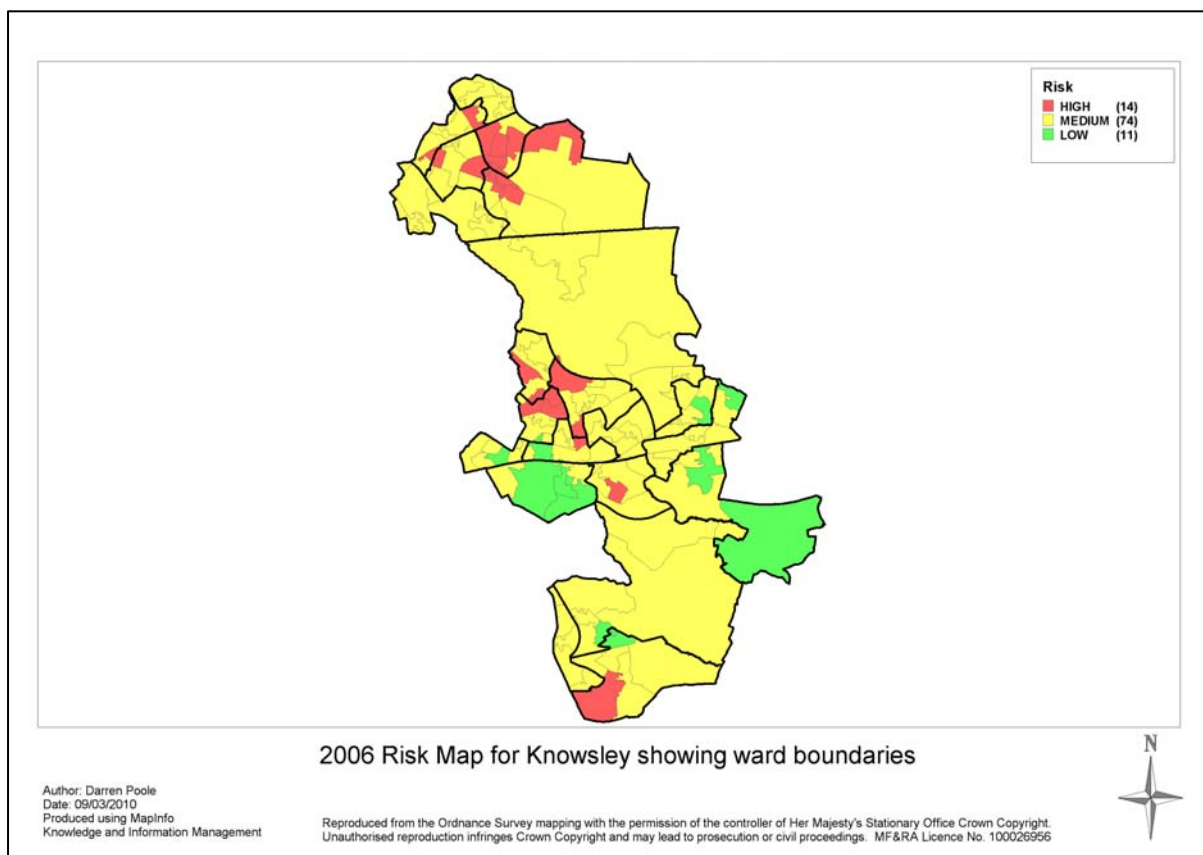
Knowsley Risk Maps

Our assessment of risk is completed using the most current data available. The purpose of the map is to inform our decisions about how best we can use our resources to reduce and target risk.

As the map is a snap shot, the risk category from one map to another will not represent an equal measure of risk, but will represent how each area compares to every other on Merseyside at that moment in time.

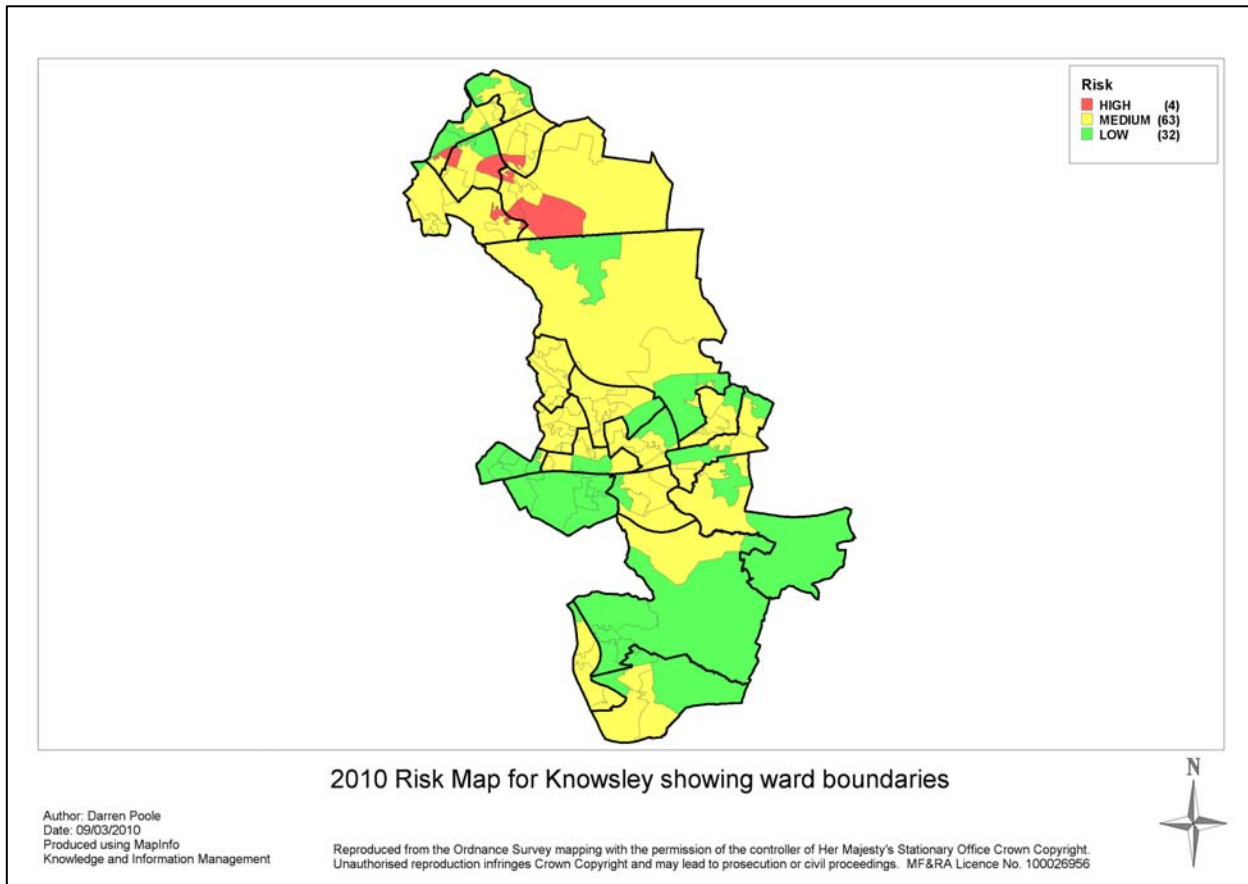
Across Merseyside we have seen the actual level of risk reducing consistently since 2006, demonstrated by the reducing numbers of emergency incidents we are called to respond to.

2006



This was our risk map from 2006; the majority of areas were assessed as medium risk with 14 areas being identified as high risk in three distinct clusters.

2010



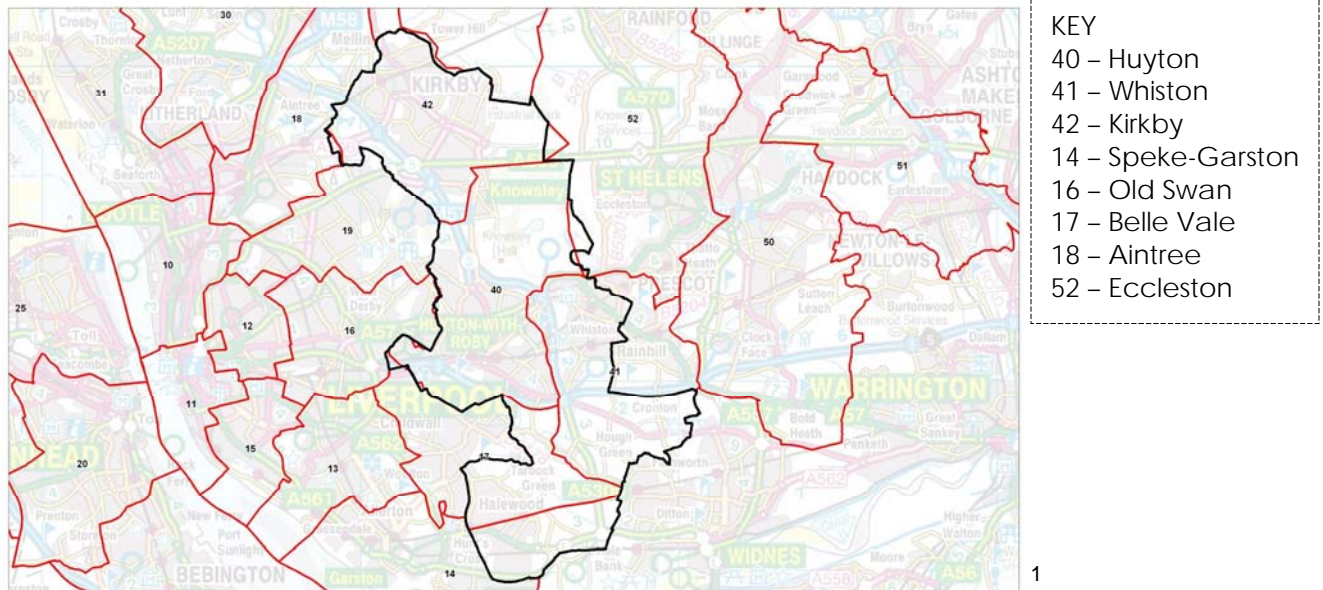
The 2010 risk map clearly shows the impact of our world leading community safety initiatives on the people and communities of Knowsley. Although the majority of areas are still medium risk, the low risk areas have nearly trebled and high risk areas have dropped from 14 to 4 and are now concentrated in one cluster in the Kirkby Central and Whitefield wards.

This map is one of the tools we use to identify where to target our prevention activities and risk reduction strategies.

Community Fire Station Areas & Emergency Activity in Knowsley

In common with all areas within Merseyside, the Fire and Rescue Service provide twenty four hour all year round emergency response from its three Community Fire Stations:

- Huyton (40)
- Whiston (41)
- Kirkby (42)



Please note: **Black outline is District boundary, red outline is Station Boundaries.**

Changes to local industry combined with an effective prevention strategy have seen the number of fire incidents reduce from 2848 in 2005/06 to 1856 in 2008/09. This is a reduction of 992 incidents or nearly 35%.

The tables below show in detail the types and location of incidents occurring in Knowsley. There is also an analysis of incidents and outcomes by type, looking at ward of origin and location by station area.

Table 1: Yearly Change in Incident Types between 2005/06 to 2008/09

Incident Type	2005 /06	2006 /07	2007 /08	2008 /09	Difference 2005/06 – 2008/09	% Change
NI33a Deliberate Property & Vehicle Fires	566	420	393	329	-237	-41.9%
NI33b Deliberate Anti-Social Behaviour Fires	2056	1828	1536	1286	-770	-37.5%
NI49a Property & Vehicle Fires	792	674	582	570	-222	-28.0%
NI49b Fatalities in Accidental Fires in the Home	2	0	0	0	-2	-100.0%
NI49c Injuries in Accidental Fires in the Home	20	28	6	21	1	5.0%
Accidental Fires in the Home	121	122	104	137	16	13.2%
Accidental Commercial Property Fires	38	39	34	45	7	18.4%
Deliberate Commercial Property Fires	30	23	31	13	-17	-56.7%
Unwanted Fire Signals	387	364	396	359	-28	-7.2%
Road Traffic Collisions	114	96	81	67	-47	-41.2%
Injuries in Road Traffic Collisions	70	64	56	67	-3	-4.3%
Fatalities in Road Traffic Collisions	1	0	0	3	2	200.0%

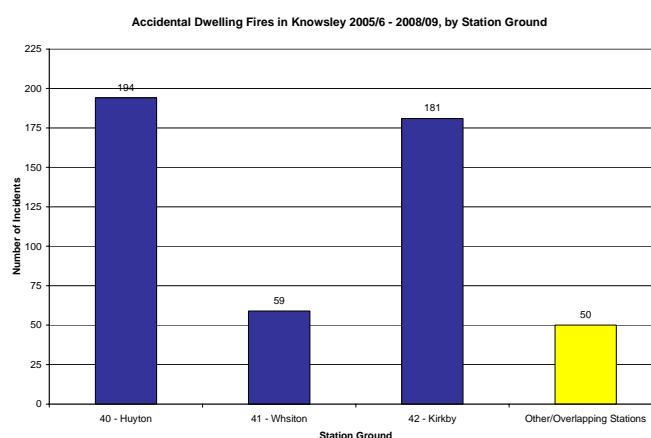
As indicated by Table 1, most incident types have seen reductions, in particular National Indicator 33, which covers arson (deliberate) fires. During the last 3 fiscal years (2006/07-2008/09) there have been no fatalities in accordance with NI49b, though there was an increase of 1 injury in accidental fires in the home (NI49c). Accidental Fires in the Home and Accidental Fires in Commercial Property both saw increases in numbers from 2005/06 to 2008/09.

Analysis of Accidental Fires in the Home

Table 2: Top 6 wards in Knowsley for Fires in the Home during 2008/09

Ward	2008/09	Proportion
Stockbridge	17	12.4%
Halewood West	13	9.5%
Northwood	13	9.5%
Cherryfield	12	8.8%
Kirkby Central	11	8.0%
Park	8	5.8%

Chart 1: Fires in the Home in Knowsley 2005/06 – 2008/09, by Station Ground



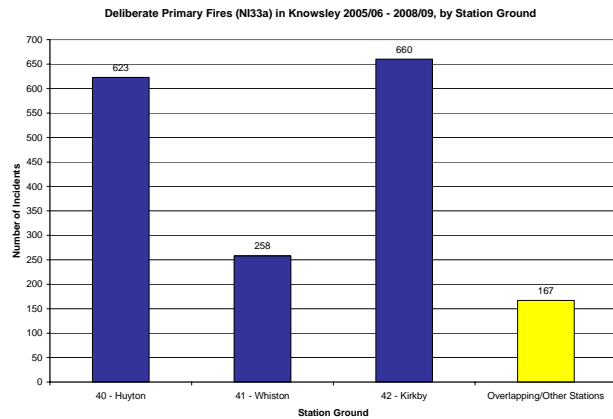
In total there were 137 Fires in the Home in 2008/09, an increase of 16 on 2005/06 (13.22%). The top ward for Fires in the Home in Knowsley during 2008/09 was Stockbridge, with 17. Of the Knowsley station grounds, Huyton has seen the greatest number of such fires between 2005/06 and 2008/09, with 194.

Analysis of Deliberate Property & Vehicle Fires

Table 3: Top 6 wards in Knowsley for Deliberate Property & Vehicle Fires during 2008/09

Ward	2008/09	Proportion
Stockbridge	24	7.3%
Northwood	24	7.3%
Kirkby Central	23	7.0%
Longview	22	6.7%
Page Moss	22	6.7%
Shevington	21	6.4%

Chart 2: Deliberate Property & Vehicle Fires 2005/06 and 2008/09, by Station Ground



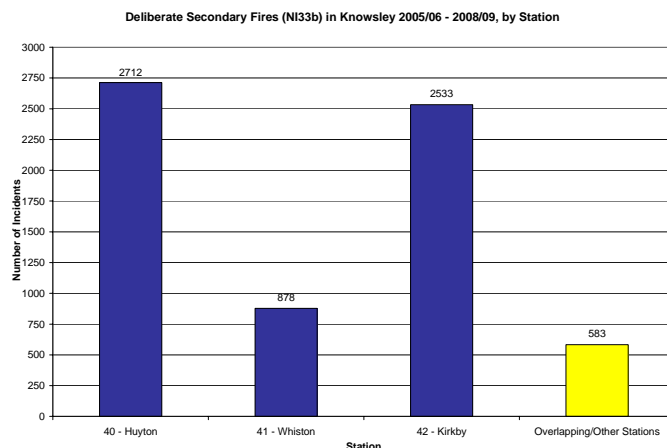
There has been a reduction of 41.87% in deliberate property & vehicle fires from 2005/06 (566 incidents) to 2008/09 (329 incidents). The top wards for NI33a fires in Knowsley during 2008/09 were Stockbridge and Northwood, with 24 each. As is the case with most incidents in Knowsley, deliberate property & vehicle fires occurred more in Huyton (623 incidents) and Kirkby (660 incidents) station grounds than Whiston (258 incidents).

Analysis of Deliberate Anti-Social Behaviour Fires

Table 4: Top 6 wards in Knowsley for Deliberate Anti-Social Behaviour Fires during 2008/09

Ward	2008/09	Proportion
Longview	124	9.6%
Stockbridge	112	8.7%
Whitefield	106	8.2%
Kirkby Central	105	8.2%
Page Moss	100	7.8%
Northwood	79	6.1%

Chart 3: Deliberate Anti-Social Behaviour Fires (NI33b) 2005/06 – 2008/09, by Station Ground



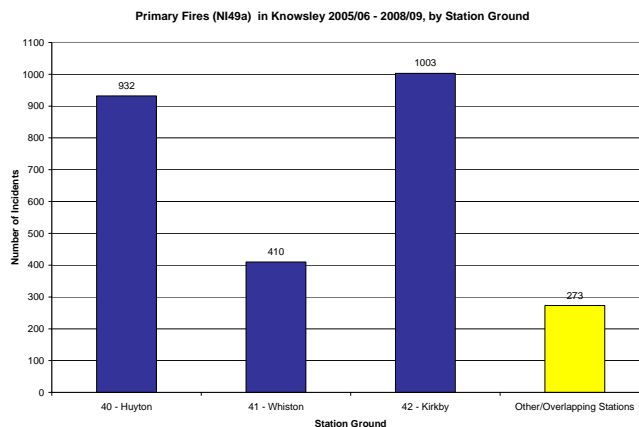
There has been a steady, progressive reduction in deliberate anti-social behaviour (ASB) fires from 2005/06 (2056 incidents) to 2008/09 (1286 incidents), which overall gave a 37.45% decrease. During 2008/09, Longview witnessed the greatest number of ASB fires, with 124 (9.64% of all in Knowsley during 2008/09). Huyton (2712 incidents) and Kirkby (2533 incidents) again accounted for more than Whiston (878 incidents).

Analysis of Property & Vehicle Fires

Table 5: Top 6 wards in Knowsley for NI49a during 2008/09

Ward	2008/09	Proportion
Kirkby Central	45	7.9%
Stockbridge	44	7.7%
Northwood	42	7.4%
Shevington	31	5.4%
Cherryfield	31	5.4%
Park	30	5.3%

Chart 4: Primary Fires (NI49a) 2005/06 – 2008/09, by Station Ground



Overall, property & vehicle fires (NI49a) have reduced by 222 from 2005/06 (792) to 2008/09 (570), which equates to a 28.03% decrease over that time. Kirkby Central was the ward in Knowsley that accounted for the greatest number of property & vehicle during 2008/09 with 45. In terms of station ground Huyton accounted for 932 Primary Fires, Whiston 410 and Kirkby 1,003.

Analysis of Injuries Occurring in Fires in the Home

Table 6: Distribution of Injuries in Fires in the Home in Knowsley (2008/09) by ward

Ward	2008/09	Proportion
Stockbridge	3	14.3%
Halewood West	3	14.3%
Shevington	2	9.5%
Whitefield	2	9.5%
Whiston South	2	9.5%
St Michaels	2	9.5%
Northwood	1	4.8%
St Gabriels	1	4.8%
Halewood North	1	4.8%
Halewood South	1	4.8%
Prescot East	1	4.8%
St Bartholomews	1	4.8%
Swanside	1	4.8%
Grand Total	21	

Stockbridge has been either 1st or 2nd in NI33a, NI33b, NI49a and Accidental Fires in the Home, and has seen the joint most Injuries in Fires in the Home, with 3, along with Halewood West. In terms of Station Ground, the greatest number of injuries during 2008/09 occurred in Huyton, with 8.

Merseyside Fire and Rescue Service have a number of staff based in the Knowsley area whose roles and responsibilities are to reduce risk throughout the community by protective community safety services and these include:

- Older Persons Advocate
- Drug and Alcohol Advocate
- Community Safety Advocate
- Youth Intervention Officer
- Advocates tackling arson and anti-social behaviour
- Road Safety Advocate
- School Fire Liaison Officers
- Princes Trust Team

As part of our home safety campaign, we have carried out 63,846 home fire safety visits to private dwellings over the last ten years. In addition to this, we offer advice on how to prevent fires and the action to be taken in case of fire.

Partnership arrangements

Merseyside Fire and Rescue are fully committed to partnership working and achieving jointly agreed priorities. We are an active member of the Local Strategic Partnership and Fire and Rescue Service managers provide representation on all six Area Partnership Boards across the Knowsley area. In addition, the Fire and Rescue Service attend thematic groups for children and younger people, Health and Wellbeing, Safer Knowsley and Strategic Housing and the Environment.

Fire & Rescue Service Priorities

Merseyside Fire & Rescue Service has developed its own suite of local performance indicators which reflect risks that affect the communities of Merseyside and the priorities in each local area to ensure we deliver the best services in those areas to reduce risk and improve outcomes.

The full list of our performance indicators are contained in Appendix A.

5. Knowsley Local Area Story of Place

Geography & Population

Knowsley is one of five metropolitan districts on Merseyside. The borough covers 33 square miles, two thirds of which is green belt and has a population of 150,800 people occupying 66,000 households. Over the last 30 years, the borough has experienced a decline in its population. Almost 30 per cent of homes are social housing. Fewer than 2 per cent of people are from black and minority ethnic groups.

Description

The borough does not have a single urban centre and the population is concentrated in three towns - Huyton, Kirkby, and Halewood. Smaller villages include Prescot, Whiston, Cronton, Stockbridge and Knowsley. The M57 and M62 motorways and the A580 East Lancs Road provide good transport links to Liverpool and Manchester.

The borough's industrial base is concentrated in business parks with retail and commercial activities focused on town centres - Kirkby in the north, Huyton in the west and Prescot in the east. Employment was traditionally based on manufacturing in areas like engineering, the car industry and food processing but over 70 per cent of companies and 60 per cent of jobs are now in the service sector. Three-quarters of all Knowsley businesses are small or medium-size enterprises.

Social Context

The borough faces significant problems. Knowsley is the fifth most deprived borough in England and has high levels and concentrations of deprivation, poor health and low attainment. Large numbers of people in the borough depend on benefits, particularly incapacity benefit.

Knowsley has low skill levels. Fewer people than average are qualified to degree level while the number of people qualified to NVQ Levels 1 and 2 also lags behind the national average. More residents in Knowsley have no qualifications compared with the rest of Merseyside and Great Britain.

Overall, people have lower satisfaction rates than other parts of the country. 72.2 per cent of people are satisfied with the area compared with the average of 81.2 per cent.

Local Authority Structure

The borough is divided into six Area Partnership Boards (APBs) and further subdivided into 21 electoral wards.

The Local Strategic Partnership is made up of the Council, police, fire service, Primary Care Trust and economic and voluntary sector representatives. The Knowsley Partnership is governed by a Partnership Board which provides overall leadership for the partnership and monitors progress made in meeting targets. An Executive Team manages the business of the Partnership through the thematic partnerships and Area Partnership Boards who focus on delivery. The Partnership's aim is to turn Knowsley into 'the Borough of choice' by 2023.

The Safer Knowsley Partnership has closely examined the social demography of the Borough.

ACORN Category	% UK Pop	% Knowsley Pop
Wealthy Achievers 1	26.6	12.3
Urban Prosperity 2	10.7	0.4
Comfortably Off 3	26.6	27.9
Moderate Means 4	14.5	8.9
Hard-Pressed 5	22.4	50.5

ACORN (A Classification Of Residential Numbers) is a community profiling tool which analyses postcodes to determine lifestyle and demographic profiles.

The most dominant Acorn Category in Knowsley is Hard Pressed which accounts for over 50% compared to the UK average of 22%.

Hard Pressed' is defined by ACORN as communities that
"contains the poorest areas of the UK. Unemployment is well above the national average. Levels of qualifications are low and those in work are likely to be employed in unskilled occupations. Household incomes are low and there are high levels of long term illness in some areas. There are large number of single adult households including lone parents. These people are experiencing the most difficult social and economic conditions in the whole country, and appear to have limited opportunity to improve their circumstances".

Local Priorities

In Knowsley, the Local Strategic Partnership has considered all of the risks affecting the Borough and the Local Area Agreement reflects the National Indicators selected by the Partnership to reduce those risks and improve outcomes for the local communities.

These are summarised in appendix B.

6. Our Plans to Reduce Risk and Address Local Priorities in Knowsley

The actions that follow outline Merseyside Fire & Rescue Service's commitment to meet local needs and improve outcomes for the people of Knowsley.

The table below sets out the specific activities and projects that Merseyside Fire and Rescue Service will carry out in Knowsley, often in partnership, to help achieve the priorities for the area and deliver positive outcomes for the people of Knowsley. These action points will be supported by specific District and Station local performance indicator targets.

Activity/Project/Location	Expected Outcomes/Contribution to LAA
<p>PRINCES TRUST:</p> <p>Working with Local NEET young people; 16 - 25 years of age on a full time 12 week personal development programme.</p> <p>Station 40 - Huyton with additional support from 41 - Whiston & 42 - Kirkby as required.</p>	<p>Young people in Knowsley will have raised aspirations, better prospects and have new skills. They will be safer in their homes and on the road and will be less likely to commit acts of anti - social behaviour, resulting in Knowsley becoming safer, stronger and healthier.</p> <p>Young people will be given the opportunity to access further education or employment through a 12 week personal development programme.</p> <p>LAA Themes: Raising Attainment & Skills. Unlocking potential & Raising aspirations. A diverse & Prosperous Economy</p> <p>National Indicators: NI.1, NI.29, NI. 30, NI.33, NI.39</p> <p>MFRS Local Indicators: LPI. 41-42, LPI 90, LPI 10, LPI 10a.</p>

<p>SCHOOL FIRE LIAISON OFFICER:</p> <p>Two Firefighters working in Knowsley Secondary Schools, providing positive role models through education and engagement.</p> <p>Station 40 - Huyton, 41 - Whiston and 42 - Kirkby to provide support to Knowsley SFLOs</p>	<p>The people of Knowsley will become safer from the damage and concern caused by anti-social behaviour. This will help to reduce the number of anti-social behaviour fires and ensure that our Firefighters are safer whilst they carry out their work in the community.</p> <p>LAA Themes: Raising Attainment & Skills. Unlocking potential & Raising aspirations. Safer more Cohesive Communities.</p> <p>National Indicators: NI.15, NI.16, NI.29, NI.33, NI.39.</p> <p>MFRS Local Indicators: LPI. 41-42. LPI. 90. LPI.10 LPI. 10a.</p>
<p>BEACON COURSE:</p> <p>12 week personal development course for 13-16 year olds to integrate socially excluded children through education and engagement.</p>	<p>Knowsley communities will become safer, stronger and healthier. Young people will be given the opportunity to build self esteem and motivation to attain at school. This will help to reduce the number of anti-social behaviour fires and make the communities safer for our citizens and staff.</p> <p>LAA Themes: Raising Attainment & Skills. Unlocking potential & Raising aspirations. A Diverse & Prosperous Economy</p> <p>National Indicators: NI.15, NI.16, NI.29, NI.33, NI.39.</p> <p>MRFS Local Indicators: LPI. 41-42. LPI. 90. LPI.10 LPI. 10a.</p>

<p>NEIGHBOURHOOD FIREFIGHTER:</p> <p>Three staff actively engage with the local communities through Area Partnership Boards and Pride Team Meetings.</p>	<p>Knowsley communities will become safer and stronger. This will help Merseyside Fire and Rescue Service to identify and collaborate on dealing with jointly agreed priorities. Our Firefighters will be safer whilst they are working in the community.</p> <p>National Indicators NI.1 and NI.33.</p> <p>LAA themes: Safer more Cohesive Communities. Improving the offer and Quality of Place.</p> <p>MFRS Local Indicators LPI. 44 - 49.</p>
<p>ARSON REDUCTION:</p> <p>An Arson Reduction Advocate is embedded with the Anti-social Behaviour Unit for Knowsley MBC</p> <p>All three Community Fire Stations within Knowsley will liaise with the Arson reduction using the agreed methods of communication. This will be co-ordinated by the Watch Manager on Red watch for each of the three stations.</p>	<p>Knowsley communities will become safer and stronger from the reduced number of arson incidents. This will help Merseyside Fire and Rescue Service and their partners to tackle joint priorities and make the communities safer for all of our citizens.</p> <p>LAA Priorities Safer more Cohesive Communities. Improving the offer and Quality of Place.</p> <p>National Indicators NI.32, NI.33</p> <p>MFRS Local Indicators LPI. 48 - 50. LPI.79, LPI.85, LPI.90,</p>

<p>COMMUNITY ROOM – KIRKBY FIRE STATION:</p> <p>A Community Meeting Space providing 1 Large meeting room with Smart Board and Internet Facilities & access to 10 Laptops, Smaller 2nd Meeting Room and adjacent food and Drink preparation area.</p> <p>Station 42 - Kirkby with support from 40 - Huyton and 41 – Whiston.</p>	<p>Knowsley communities will become safer, stronger and healthier. Community groups in Kirkby and the surrounding areas will be given access to physical exercise and leisure pursuits and this will help to make our communities fitter and healthier. This will also facilitate community cohesion.</p> <p>LAA Priorities Community Safety Employment Gateway; Safety In The Kitchen; Reading Emergency; Volunteer Recruit Strategy; Teaching English as a Foreign Language; Community Information System;</p> <p>National Indicators NI.38, NI.39, NI.87, NI.111, NI.115, NI.141, NI.163.</p> <p>MFRS Local Indicators LPI.10</p>
<p>YOUTH INTERVENTION ACTIVITIES:</p> <p>A Youth Intervention Officer is embedded with the Anti-social Behaviour Unit for Knowsley MBC, providing a range of bespoke youth Intervention projects.</p> <p>All three Community Fire Stations within Knowsley will liaise with the Youth Intervention Officer, through the Station and Locality Managers. This will be co-ordinated by the Watch Manager on White watch for each of the three stations.</p>	<p>Knowsley communities will become safer, stronger and healthier. This will reduce the number of anti-social behaviour incidents and make the communities safer for our citizens and Firefighters</p> <p>LAA Themes Safer More Cohesive Communities. Unlocking Potential & Raising Aspirations. Raising Attainment & Skills</p> <p>National Indicators NI.15, NI.16, NI.29, NI.33, NI.39.</p> <p>MFRS Local Indicators LPI.10, LPI.10a.</p>

<p>PROTECTING THE VULNERABLE:</p> <p>Reduce the number of deaths and injuries in the most vulnerable groups by providing a range of interventions, which will include smoke alarms for hard of hearing and domestic sprinklers</p> <p>All Community Fire Stations in Knowsley will assist in the referral process.</p>	<p>Knowsley communities will become safer, stronger and healthier. The vulnerable members of our communities will be identified and offered a range of joint interventions to ensure that they are safer and healthier in their own homes.</p> <p>LAA Themes Unlocking the potential and raising aspirations. Safer more cohesive communities.</p> <p>National Indicators NI.49, NI.141.</p> <p>MFRS Local Indicators LP1.61, LPI.66, LPI.67, LPI.72, LPI.73, LPI.78.</p>
<p>SMOKING CESSATION:</p> <p>To provide direct referrals to Knowsley PCT Smoking Cessation Service from Home Fire Safety Checks and to share intelligence to target the most at risk areas of the Community. Also assisting us to target reduction in accidental dwelling fires in hot spot areas.</p> <p>Stations: 40 - Huyton, 41 - Whiston and 42 - Kirkby and Knowsley CFS Team.</p>	<p>Knowsley communities will become safer and healthier in their own homes. All sections of the community will be fitter and healthier and this will contribute to a reduction in the number of accidental dwelling fires</p> <p>LAA Themes Unlocking the potential and raising aspirations.</p> <p>National Indicators NI 120 and 121.</p> <p>MFRS Local Indicators 61-66</p>

<p>KNOWSLEY ROAD SAFETY:</p> <p>The Service will work with partners to educate children and young people in Knowsley about the risks that occur on the roads</p> <p>All Knowsley Stations will support the RTC Reduction Officers through training delivery and demonstration.</p>	<p>The young people will be safer and less likely to cause accidents on the roads. This will help to reduce the number of accidents and collisions on the roads in Knowsley and make the roads safer for all users.</p> <p>LAA Themes A well connected Knowsley</p> <p>National Indicators NI.16 and NI.175.</p> <p>MRFS Local Indicators LP1.38, LPI.41, LPI.42.</p>
--	---

Generic Merseyside Fire & Rescue District Action Plan 2010/11

Whilst the action plan above has been developed to specifically address the needs and priorities in Knowsley, the table below outlines four generic action points that will be applied to all of the five districts of Merseyside. As such they address issues of importance to the whole of Merseyside Fire and Rescue Service.

Activity	Expected Outcomes
<p>FITNESS AND HEALTH:</p> <p>District and station staff to develop local approaches to improving health and fitness in the workplace.</p>	<p>Our staff will have healthier lifestyles;</p> <ul style="list-style-type: none"> • Through improved fitness, • Earlier identification of medical conditions. • Early intervention and remedial action to assist in timely recovery. <p>This will be achieved through routine health screening.</p>
<p>CARBON FOOTPRINT:</p> <p>District and station staff to help reduce the overall carbon emissions of Merseyside Fire & Rescue Service through reduction in the impact of fire fighting activity.</p>	<p>CO2 emissions on Merseyside will reduce.</p> <ul style="list-style-type: none"> • The reduction in dwelling fires will directly contribute towards the reduction in CO2 release from fire. • The reduction in the number of operational incidents will contribute towards a reduction in fuel use and carbon emissions by fire appliances. <p>Before and after measurement of emissions resulting from fire fighting are to be developed by the Energy and Environmental Manager.</p>

<p>CORPORATE SOCIAL RESPONSIBILITY:</p> <p>District and station staff to take an innovative approach to engaging with charitable organisations to deliver benefits to our communities whilst contributing to the overall aims of Merseyside Fire & Rescue Service.</p>	<p>The local community will benefit from the outcomes of our joint working with voluntary and charitable organisations.</p> <p>Qualitative evidence of engagement with charities that benefits both Merseyside Fire & Rescue Service and the community will be gathered via case studies.</p>
<p>EQUALITY AND DIVERSITY:</p> <p>District and Station staff to contribute delivering our service equitably to all communities and individuals by considering the needs and risks associated with their communities and to develop innovative ways of addressing those needs and risks.</p>	<p>The hardest to reach in our community will benefit from risk reduction initiatives, regardless of the cultural, religious or language barriers which make them harder to reach.</p> <p>Demonstrable examples of where the actions of districts and stations have had a positive impact on “at risk” and/or underrepresented communities and individuals will be reported.</p>

7. Conclusion

In addition to providing emergency response to both fire and non-fire incidents, Merseyside Fire and Rescue Service are actively engaged in helping our communities and partners to make Knowsley a safer, stronger and healthier place to live.

We are focussing our efforts on reducing accidental property fires through innovative intelligence led solutions targeting the most vulnerable and at risk sections of our communities.

The continued reduction of deliberate fires through working in partnership remains as a joint area of priority for action in Knowsley.

We will work with our partners to make Knowsley a healthier community by promoting independence, health and wellbeing. This will be achieved through tackling a range of health inequalities with all relevant partners and stakeholders.

Knowsley's Local IRMP is designed to work with the 7 key drivers contained within the Sustainable Communities Strategy. This will support Knowsley's vision of becoming the Borough of Choice.

8. Appendix A – Merseyside Fire & Rescue Service’s Local Performance Indicators

Category	LPI No	Narrative
Smoke Alarms	1	% of fires in Accidental Dwelling Fires where smoke alarm has actuated
	2	% of fires attended where a smoke alarm was fitted but did not activate.
	3	No smoke alarm was fitted
Community Safety	4	Home Fire Safety Checks carried out in domestic dwellings that have not previously been visited.
	5	Home Fire Safety Checks carried out in domestic dwellings as a revisit.
	6	Vulnerable Property Risk Assessments Carried Out
	7	Total Number of Risk Assessments Completed (including mailshots)
	8	Percentage who said 'That they Felt Safer' as a result of HFSC Intervention
	9	Percentage of properties where risk reduced from high to acceptable within 7 days
	10	Percentage of young people who move from the NEET cohort (not in education, employment or training) into EET (employment, education or training) by completing the Prince’s Trust or EARLY programme within 3 months of finishing the programme.
	11	The number of HFSC's carried out in dwellings previously identified as High risk
	12	Percentage high risk referrals from HFSC's.
NI 14 Avoidable contact: The average number, of customer contacts per received customer request	13	Percentage of HFSC Requests Received Via the Internet
	18	Percentage of customer contacts via the internet

Category	LPI No	Narrative
Non Domestic Fires	19-24	Sleeping - Unfamiliar
	25-27	Sleeping – Familiar & Licensed
	28-32	Public Buildings
	33-35	Workplace
Road Traffic Collisions		Number of RTC's Identified as 'Persons Trapped Requiring Release' attended in Merseyside
	41-42	Number of injuries at RTC's
	43	The percentage of RTC's classified as 'Persons Trapped' attended within 8 minutes of the notification.
Accidental Fires	44	Accidental Fires in dwellings per 10,000 dwellings.
	45	Fatalities from accidental dwelling fires per 100,000 population.
	46	The number of injuries from accidental dwelling fires per 100,000 population.
	47	The percentage of accidental dwelling fires confined to room of origin.
Deliberate Fires	48	Number of deliberate dwelling fires per 10,000 population in Occupied Properties
	49	Number of deliberate dwelling fires per 10,000 population in Unoccupied Properties.
False Alarms	51	Call Challenging
	52	The number of malicious false alarms attended.
Unwanted Fire Signals	53	The number of false alarm calls due to automatic fire alarm equipment.
MACC	55	Percentage of 999 calls answered within 10 seconds
	56	Percentage of Calls Handled within 45 seconds - Call Accepted to Alert 45 seconds

Category	LPI No	Narrative
Standards of Fire Cover	60	Standards of fire cover: High risk 1st appliance within 5 mins and 2nd within 8 mins. Medium risk 1st appliance within 6 mins and 2nd within 9 mins. Low risk 1st appliance within 6 mins and 2nd within 10 mins
NI 49 Number of primary fires and related fatalities, and non-fatal casualties, excluding precautionary checks	61-66	Primary Fires - Merseyside
	67-72	Fatalities from primary fires- Merseyside
	73-78	Injuries from primary fires
	79-84	Primary arson Fires – Merseyside
	85-90	Secondary arson Fires – Merseyside
& Energy Environment	93	Electricity used by all MFRS buildings - divided by floor space
	94	Gas used by all MFRS buildings - divided by floor space
	95	Water used by all MFRS buildings - divided by floor space
	96 New!	Waste generated per person per annum
	97 New!	Carbon Output of all buildings
H & S	98-102	Operational Staff Injuries – On Duty
Finance	108	Net expenditure on the Fire and Rescue Service per head of the population
	109	Cashable Efficiency Savings
	128	The % of invoices which were paid by the Authority within 30 days of such invoices being received by the Authority
Time & Resource Management	110	Percentage of time 42 appliances are available
	111	The number of working days/shifts lost to sickness per head whole-time uniformed personnel.
	112	The number of working days/shifts lost to sickness absence per head, all personnel.
	113	The percentage of personnel eligible for the fire-fighters pension scheme taking ill health retirement
	114	The percentage of those personnel eligible for the Local Government Pension Scheme taking ill health retirement

Category	LPI No	Narrative
Equality & Diversity	116	18% of all new recruits appointed until 2013 to be women
	117	13.6% of all new recruits appointed until 2013 to be from minority ethnic groups
	118	By 2013 the % of staff with a disability to be 19% in line with the economic population of Merseyside who have a disability
	119	To achieve Excellence in the Local Government Equality Framework
Training	124	Percentage of Personnel who have completed BA/ Hot Fire Refreshers per year
	125	Percentage of grey book Personnel who have completed First Aid / FPOS
	126	Percentage of Personnel who have completed Water Awareness Level 2 at the designated Locations per year
	127	Percentage of Station/ Group Managers to complete ICS assessments yearly

9. Appendix B - Knowsley' Local Area Priorities

The table below shows the Selected National Indicators chosen as priorities for the Local Strategic Partnership in Knowsley.

Raising attainment and skills

NI 80 - Achievement of level 3 qualification by age 19

NI 163 - Working age population qualified to at least Level 2 or higher

Statutory DCSF16+1

NI 72 - Early Years (EYFSP) – to increase achievement for all children at age 5

NI 73 - Key Stage 2 – to increase proportion achieving level 4+ in both English and maths

NI 74 Achievement at level 5 or above in both English and Maths at Key Stage 3

NI 75 Achievement of 5 or more A*-C grades at GCSE or equivalent including English and Maths

NI 82 Inequality gap in the achievement of a Level 2 qualification by the age of 19

NI 87 - Attendance – to reduce persistent absentee pupils in secondary schools

NI 92 - Early Years (EYFSP) – to narrow the achievement gap at age 5

NI 93 - Key Stage 1-2 – to improve proportion progressing 2 national curriculum levels in English

NI 94 - Key Stage 1-2 - to improve proportion progressing 2 national curriculum levels in Maths

NI 99 - Children in care – to increase proportion achieving level 4+ in English at Key Stage 2

NI 100 - Children in care – to increase proportion achieving level 4+ in maths at Key Stage 2

NI 101 - Children in care – to increase proportion achieving 5 A*-C grades at GCSE and equiv including GCSE English and maths

Attendance – to reduce persistent absentee pupils in primary schools (2009/10)

Local

Percentage of 16 -18 year olds not in education, employment and training (NEET)

Young people receiving accredited outcomes

Unlocking the potential and raising aspirations

NI 38 Drug - related (Class A) offending rate

NI 39 - Alcohol-harm related hospital admission rates

NI 56 Obesity among primary school children

NI 111 - first time entrants to Youth justice system (gross)

NI 112 - Under 18 conception rate

NI 115 - Substance misuse by young people

NI 120 All age all cause mortality rate

NI 121 - Mortality rate from all circulatory diseases at ages under 75

NI 130 - Social Care clients receiving Self Directed Support (Direct Payments and Individual Budgets)

NI 135 - Carers receiving needs assessment or review and a specific carer's service, or advice and information

NI 138 - Satisfaction of people over 65 with both home and neighbourhood

NI 141 - Number of vulnerable people achieving independent living

Local

Increase breast feeding rates

Reducing smoking prevalence

A well connected Knowsley

NI 167 – Congestion – average journey time per mile during the morning peak

NI 175 - Access to services and facilities by public transport. walking and cvcline

A diverse and prosperous economy

NI 151 - Overall employment rate

NI 153 - Working age people claiming out of work benefits in the worst performing neighbourhoods

NI 166 - Average earnings of employees in the area

NI 171 - VAT registration rate

NI 172 - VAT registered businesses in the area showing growth

Local

Narrowing the gap on entrepreneurial activity

Safer more cohesive communities

NI 1 - % of people who believe people from different backgrounds get on well together in their local area

NI 4 - % of people who feel they can influence decisions in their locality

NI 15 - *Serious violent crime rate*

NI 16 - *Serious acquisitive crime rate*

NI 29 - *Gun crime rate*

NI 30- Re-offending rate of prolific and priority offenders

NI 32 - Repeat domestic violence

NI 33 - *Arson incidents*

NI 64 - Child Protection Plans lasting 2 years or more

Local

Reduce the percentage of people who are either "fairly worried" or "very worried" about anti-social behaviour

Reduce overall crime in line with local CDRP targets - the number of recorded thefts from and of motor vehicles in Knowsley

Number of voluntary sector organisations delivering public services in Knowsley

Number of services delivered by those organisations

% of community groups in the borough participating in Neighbourhood Networks

Improving the offer and quality of place

NI 154 - *Net additional homes provided*

NI 155 - *Number of affordable homes delivered*

NI 186 - Per capita CO2 emissions in the LA area

NI 192 - *Household waste recycled and composted*

Local

To improve the quality of the local environment by reducing the gap in aspects of liveability

Increasing economic activity at all levels

NI 116 - Proportion of children in poverty

Narrowing the gap on the employment rate across the Borough for incapacity clients and lone parent